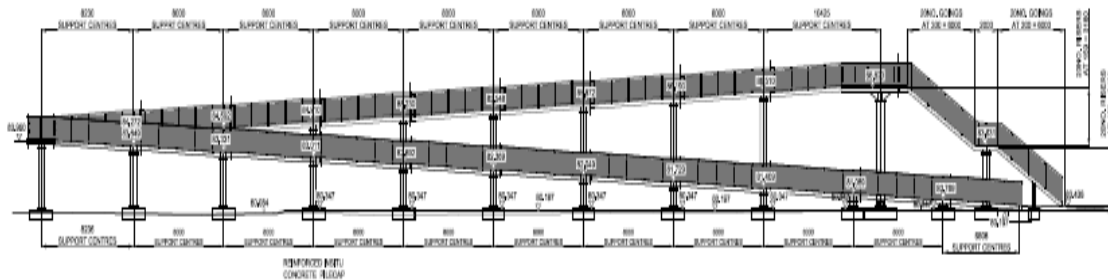
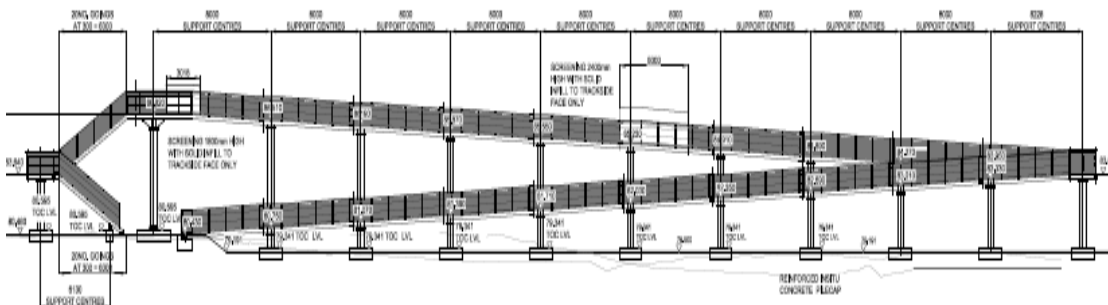


# Option 1 (ramped footbridge, non-segregated)



SOUTH ELEVATION  
SCALE 1:100



NORTH ELEVATION  
SCALE 1:100

## Advantages:

- Shorter construction time due to pre-fabricated sections
- Allows access for pedestrian, cyclist and persons of reduced mobility
- Minimal service disruption with possibly only minor alternation
- Minimal disruption to the operation of the railway
- Removes the risk of pedestrians coming into contact with the operational railway
- Complies with the Equality Act 2010

## Disadvantages:

- Level crossing will need to be closed during the consultation limiting access across the railway for several months
- No segregated provision for cyclist
- Land take requirements
- The likelihood of vandalism will be increased due to the construction of a new bridge